

Open up your map collections

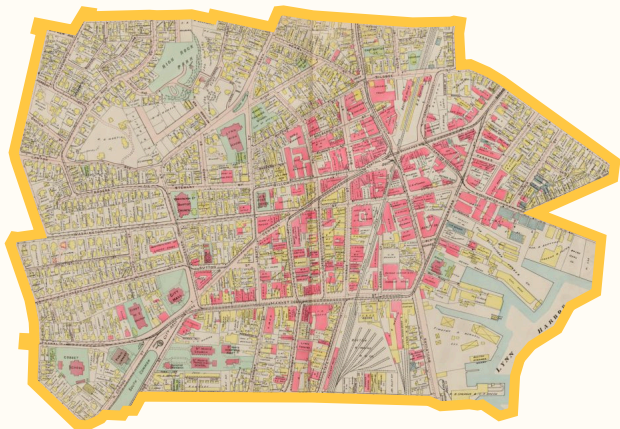
Announcing the Allmaps - IIF Partnership



Works with any IIF map

Allmaps is an ecosystem for working with maps, plans and aerial photos. It offers tools to annotate such resources with geospatial information, and turns images into interactive map layers to overlay and compare.

Allmaps is IIF-first and does not require specific infrastructure or expertise to turn digitized images into interactive maps. The only requirement is a map collection that is available through the [IIF Image API](#), and, preferably, the [IIF Presentation API](#).



Atlas of the city of Lynn, Massachusetts
Leventhal Map & Education Center at the
Boston Public Library



Hizen Nagasaki no zu Ser. 360
Leiden University Libraries

Open & light-weight

Georeferencing is the process of annotating images with geospatial information. Other than creating new versions of the image, Allmaps uses light-weight and [standardized Georeference Annotations](#) to annotate the original IIF resource.

All georeference data created with Allmaps is [published daily](#) as an openly licensed dataset. Its open source packages can be tailored to existing workflows and institutional requirements.

Making maps accessible

Allmaps is a collaboration between [Delft University of Technology Library](#) and independent developer and cartographer [Bert Spaan](#). A legal entity is being established for its maintenance and further development, while preserving the commitment to open data and open source.

The ultimate goal of Allmaps is to make all digitized maps accessible and to provide an interface for exploring IIF maps across collections and institutions.



Plan tot uitbreiding van Amsterdam
Universiteit van Amsterdam

Benefits for IIF Members

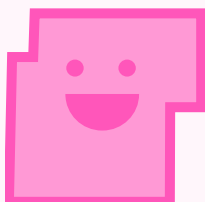
IIF Consortium Members can support the maintenance and further development of Allmaps by becoming **Allmaps Supporter** or **Allmaps Innovator**. In exchange they obtain benefits that offer more control of their collections in Allmaps, ease integrations with collection portals, and include training and support.

For more information about Allmaps and listed benefits visit the [Allmaps homepage](#), or contact Allmaps through hello@allmaps.org or the #allmaps channel in the IIF Slack. To indicate your interest in becoming Allmaps Supporter or Allmaps Innovator, reach out to the IIF Consortium staff at staff@iif.io.

Allmaps Supporters and Allmaps Innovators can reconsider their contribution on a yearly basis. The partnership between IIF and Allmaps runs for three subsequent years (2026–28) after which it will be evaluated by the IIF Executive Committee before continuation.

Benefits will be expanded on a yearly basis through the work sponsored by the Allmaps Innovators. For non-institutional members (without holdings), please contact the Allmaps team to discuss alternative benefits.

Support Allmaps as part of your IIF Membership!



Open source

Free

- ✓ Georeference any IIF map with [Allmaps Editor](#)
- ✓ View georeferenced maps with [Allmaps Viewer](#)
- ✓ Display georeferenced maps with our plugins for MapLibre, OpenLayers and Leaflet
- ✓ Use our TypeScript modules in your own software
- ✓ Download open data that contain all maps georeferenced with Allmaps

Allmaps Supporters

\$2,000 per year

- ✓ Add your collection to Allmaps
- ✓ Keep track of georeferenced maps
- ✓ Custom flow for patrons
- ✓ “Open in Allmaps” button
- ✓ Training and support
- ✓ Access future benefits made possible by Allmaps Innovators

Allmaps Innovators

\$10,000 per year

- ✓ All Allmaps Supporter benefits
- ✓ Support the development of new apps and features
- ✓ Join the Allmaps Advisory Board and set priorities for the roadmap
- ✓ Obtain beta access and offer feedback
- ✓ Contribute to establishing a governance structure for Allmaps
- ✓ Listed as partner on Allmaps homepage